

HANDBOOK HOOD FOP906XS OPERA 9925071 630005766

UPDATED MAY 2007

KITCHEN
SYSTEMS



MOTOR NR 01 POWER INPUT : 250 W
 SPEED : 3+INTENSIVE
 LIGHTING : 20 W X3 HALOGEN LAMPS
 TOTAL POWER : 310 W
 FLOW RATE (FREE DELIVERY) : 700 M3/H
 FLOW RATE (IEC 61591) 670/710 M3/H
 SOUND POWER (IEC 60704-2-13) 66
 INPUT VOLTAGE : 230V 50 HZ
 EXIT DIAMETER 150 MM
 PRESSURE MAX 500 PA
 CONTROLS : SPEED CONTROL

CONTENTS:

TECHNICAL DATA	PAGE 2
DRAWING	PAGE 3
ELECTRICAL CONNECTION	PAGE 4
METAL GREASE FILTERS	PAGE 4
CONTROLS HOW IT WORKS	PAGE 5
CHARCOAL FILTER	PAGE 6
SUBSTITUTION OF THE CHARCOAL FILTER	PAGE 6
CHANGING LAMP 20 W	PAGE 7
LIST SPARE PARTS	PAGE 8
EXPLODED VIEW	PAGE 11
WIRING DIAGRAM	PAGE 16

TECHNICAL DATA

Model

Opera

Motor: 8/40x80 4V
 Input Voltage : 230V - 50Hz
 Exit diameter: $\phi = 150\text{mm}$

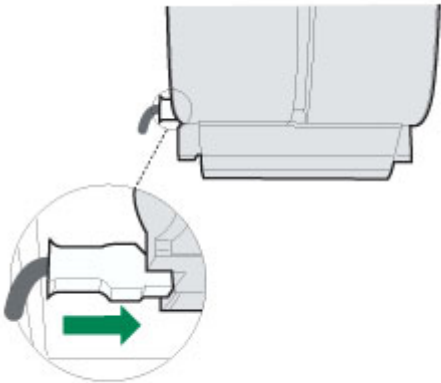
Note: Speed control by μ CS Electronic; D09 Blower
 1 (200 m³/h, 5 Pa) Resistance curve according to IEC 61591
 2 (200 m³/h, 15 Pa) Resistance curve according to IEC 61591

<i>SPEED</i>	<i>FLOW RATE</i> <i>Free delivery</i> [m ³ /h]	<i>FLOW RATE</i> <i>IEC 61591</i> [m ³ /h]	<i>PRESSURE</i> <i>Maximum</i> [Pa]	<i>POWER</i> <i>INPUT</i> [W]	<i>SOUND POWER</i> <i>IEC 60704-2-13</i> [dB(A)]
I	280	270 / 260	360	135	47
II	440	430 / 410	450	170	55
III	590	570 / 520	480	215	62
Int	700	670/610	500	250	66

ELECTRICAL CONNECTION •

Connect the hood to the mains through a two-pole switch having a contact gap of at least 3 mm.

- Remove the grease filters being sure that the connector of the feeding cable is correctly inserted in the socket placed on the side of the fan.

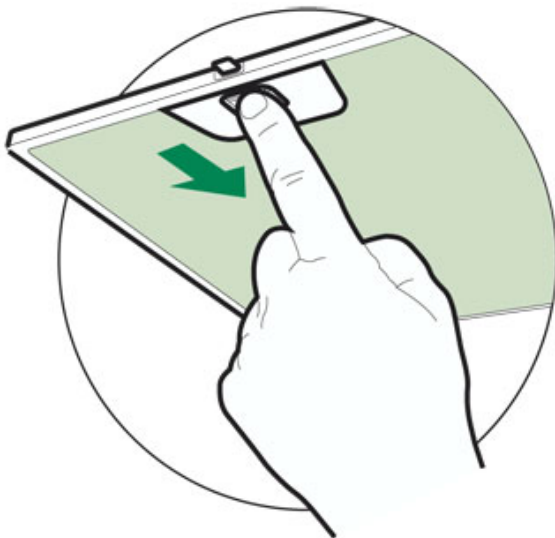


Metal grease filters

Metal filters can be washed also in a dish machine. They need to be washed every time a drop-symbol appears in the display or at least every two months. In case of very frequent use these have to be washed even more often. Alarm reset • Press the G-key for at least 2 seconds.

Cleaning

- Open the comfort panel.
- Remove the filters one by one by pushing them backwards and pulling them down contemporaneously.
- Wash the filters. Pay attention not to bend them. Make sure that filters are completely dry before putting them into their seat. (a possible modification of the filter surface doesn't influence its efficiency).
- Place the filters again into their seats and make sure that the handle of the filter remains outside.
- Close the comfort panel.



Control board



FUNCTION

T1 ON-OFF MOTOR Switches the hood motor on and off. The latest selected speed appears on the display.

T2 SPEED - Decreases the suction speed: V3 →» V2 →» V1

T3 SPEED + Increases the suction speed: V1 →» V2 →» V3

T4 INTENSIVE SPEED

Activates the intensive speed from any previously selected speed. The intensive speed can be activated even when the motor is OFF.

By pressing the same touch control once again or by switching off the motor this function can be deactivated.

Intensive speed cannot be activated when the delay function is on. Intensive speed has been timed at 10 minutes:

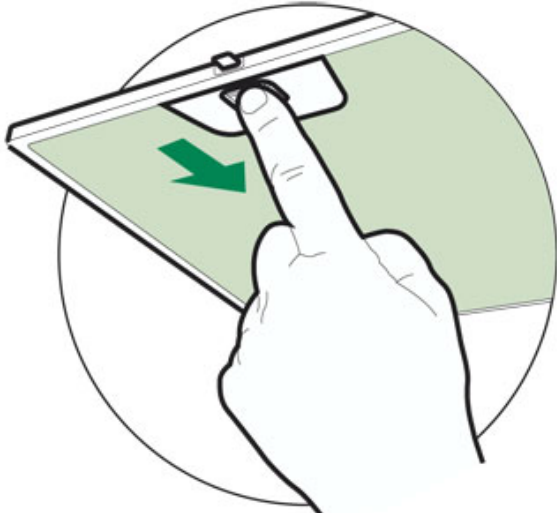
H appears on the display and a spot down on the right side flashes once a second. After 10 minutes the system activates automatically the latest selected speed.

T5 DELAY Activates and deactivates the delayed shutdown of the hood (motor + lighting) at 30 minutes: the selected speed of the hood appears on the display and a spot down on the right side flashes once a second. By pressing the same touch control once again or by switching off the motor delay function can be deactivated.

L LIGHTING Turns light on and off.

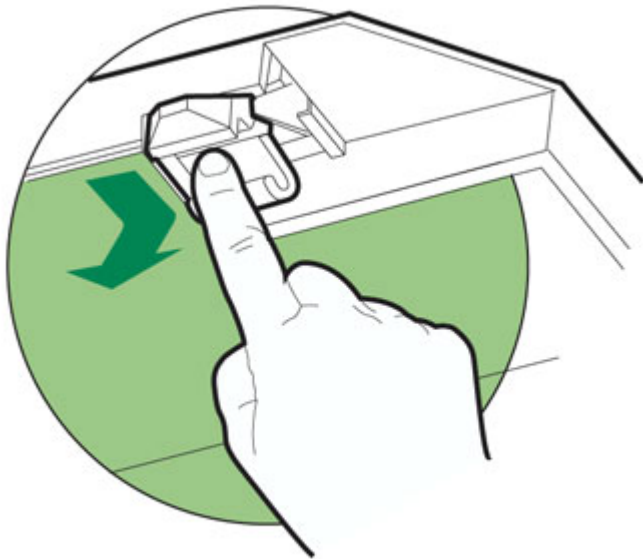
CLEANING METAL SELF- SUPPORTING GREASE FILTERS

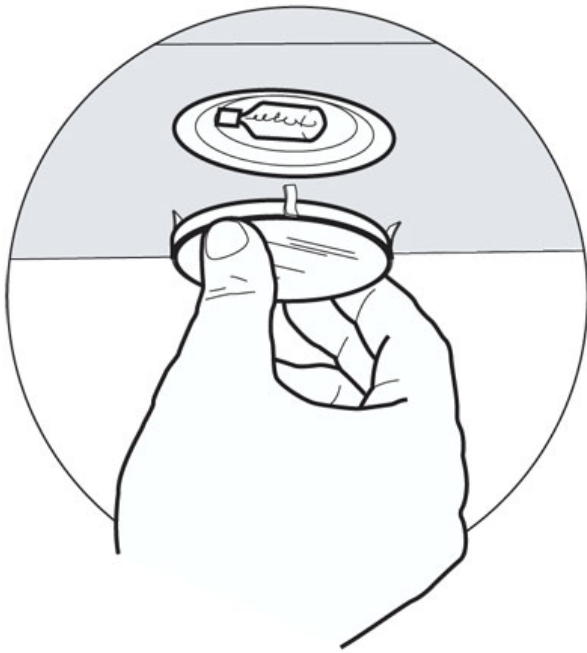
- The filters must be cleaned every 2 months of operation, or more frequently for particularly heavy usage, and can be washed in a dishwasher.
- Remove the filters one at a time holding them up with one hand and pulling the handle downwards with the other hand at the same time.
- Wash the filters, taking care not to bend them. Allow them to dry before refitting.
- When refitting the filters, make sure that the handle is visible on the outside



REPLACING THE ACTIVATED CHARCOAL FILTER

- The filter is not washable and cannot be regenerated, and must be replaced approximately every 4 months of operation, or more frequently for particularly heavy usage.
- Remove the metal grease filters
- Remove the saturated activated carbon filter by releasing the fixing hooks
- Fit the new filter by hooking it into its seating





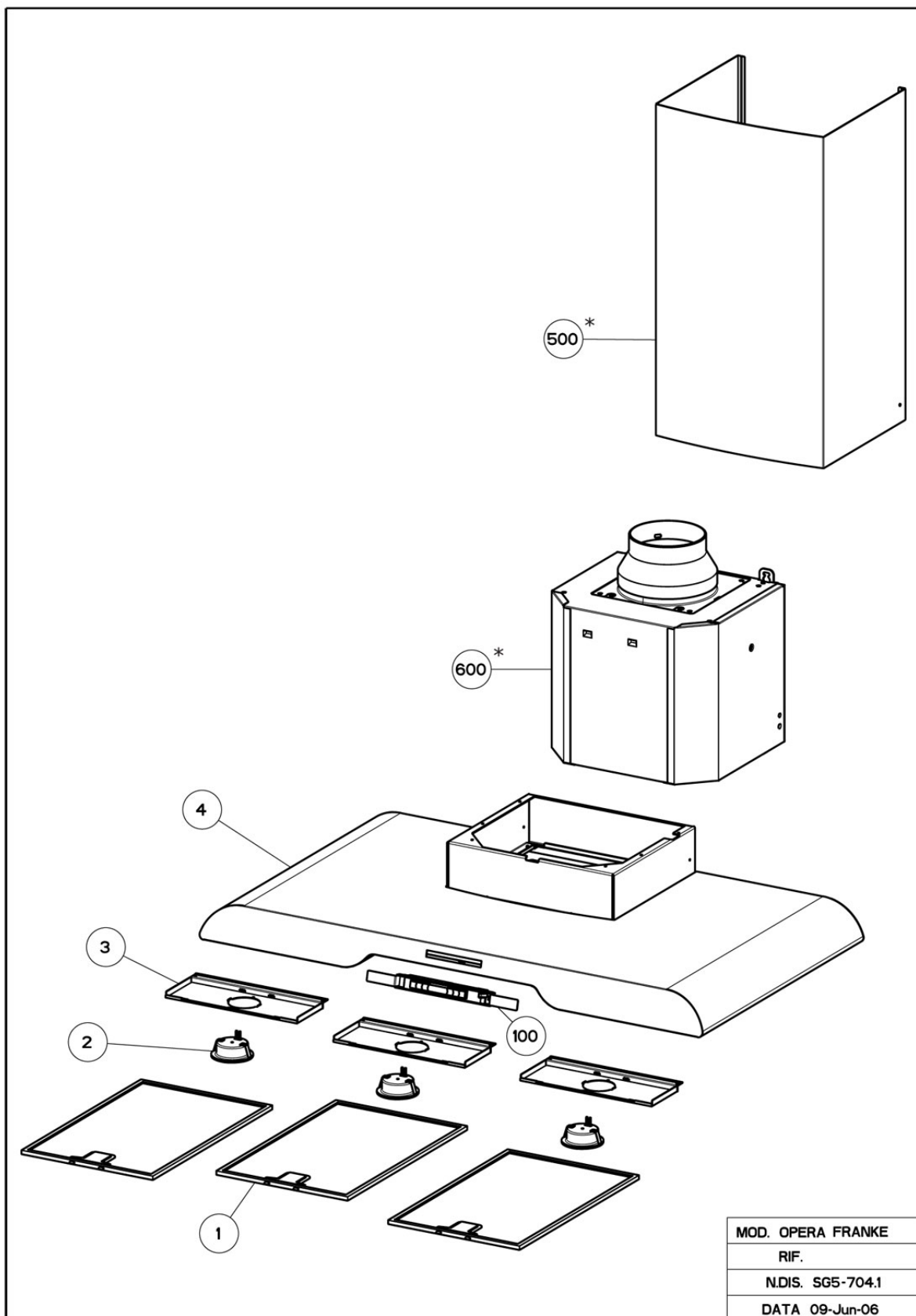
LIGHT REPLACEMENT 20 W halogen light.

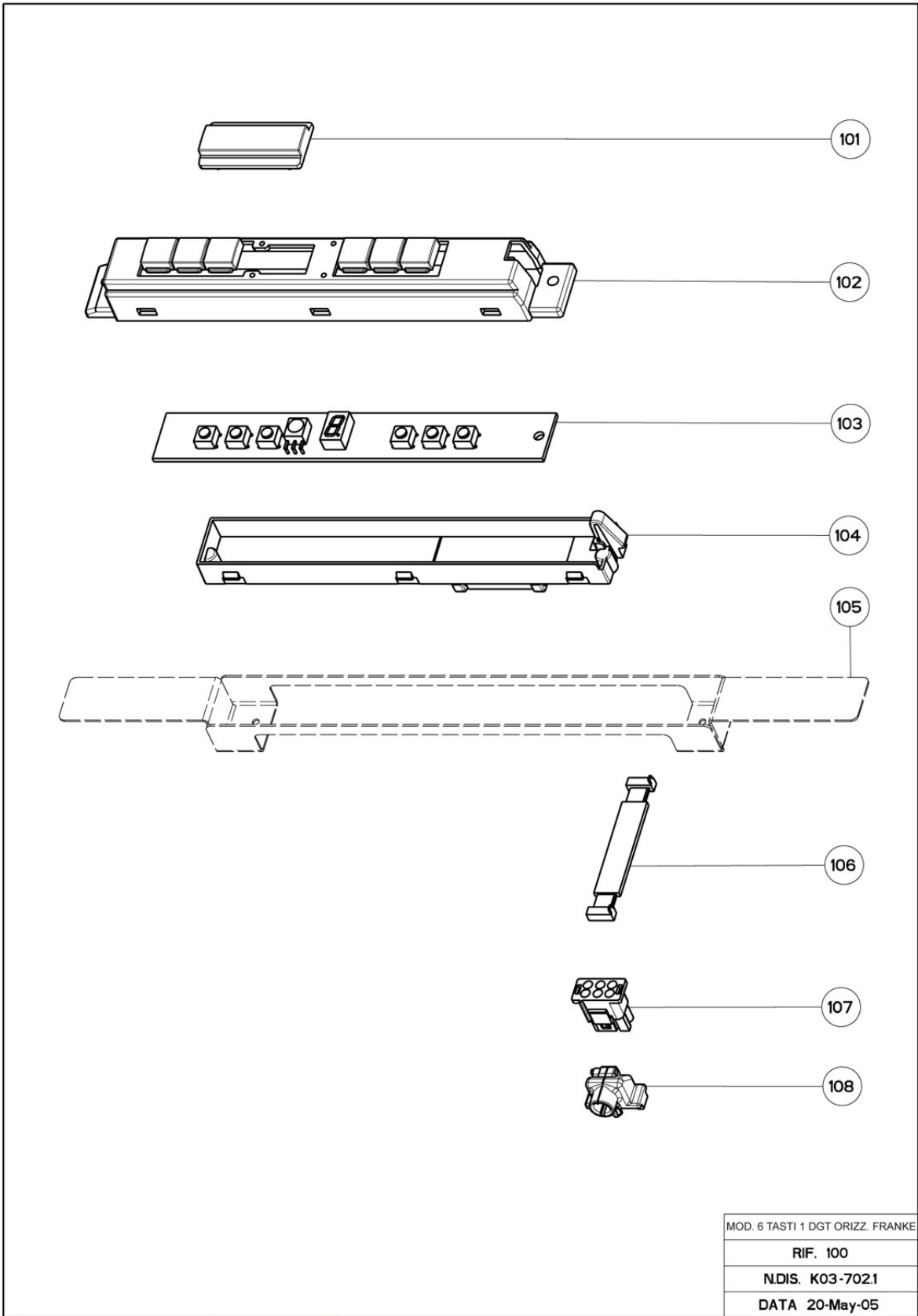
- Remove the snap-on lamp cover by levering it from under the metal ring, supporting it with one hand.
- Remove the halogen lamp from the lamp holder by pulling gently.
- Replace the lamp with a new one of the same type, making sure that you insert the two pins properly into the housings on the lamp holder.
- Replace the snap-on lamp cover.

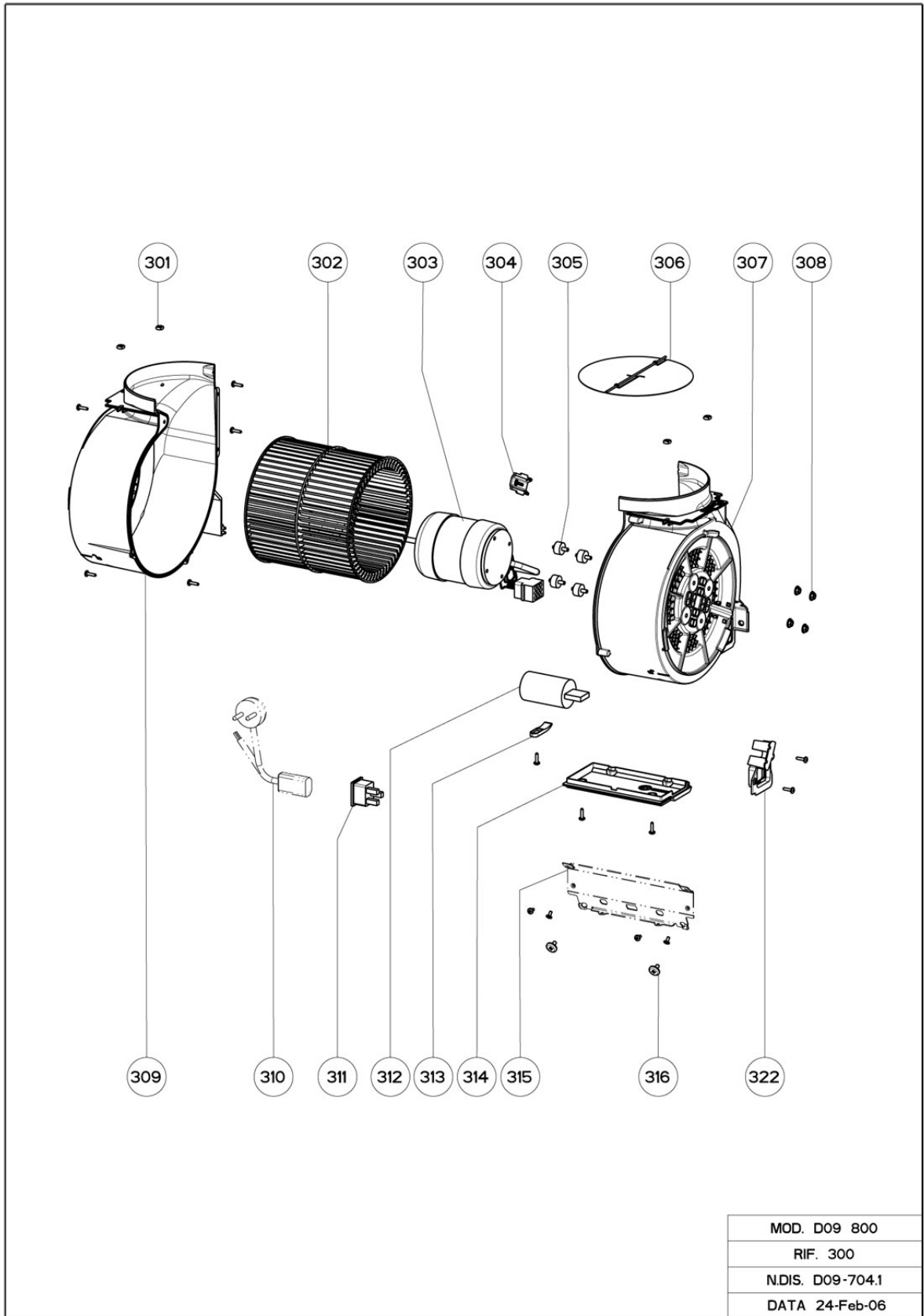
PO S	SERVIC E CODE	DESCRIPTION	DESCRIPTION	DESCRIZIONE	QUANTIT Y
1	1961119	FILTRE A GRAISSE	GREASE FILTER	FILTRO AUTOPORTANTE X (FRANKE)	3
2	1960387	BUILT IN SPOTLIGHT S1000	LAMPE S1000 C/FASTON	FARETTO AD INCASSO S1000 20W C/FASTON	3
3	1961121	SUPPORT LAMPE	LIGHTING SUPPORT	SUPPORTO FARETTO X PIEGATO	3
4	1961122	CHASSIS FOP906XS	CASING FOP906XS	SCOCCA X 90	1
100	1960712	CONTROLS ASSEMBLY	ENSEMBLE COMMANDES	GRUPPO COM.K-CS/M-CS 6-1D ORIZ.FRANKE	1
101	1960128	GLASS CONTROL BOARD	VERRE COMMANDES FRANKE PC	VETRINO COMANDI FRANKE PC	1
102	1960627	CONTROL BOARD BOX -1 D.FRANKE GM S	BOITE COMMANDES6-1	SCATOLA COM.6-1 D.FRANKE GM S.M-CS OR	1
103	1960628	CONTROLS BOARD	CIRCUIT IMPRIME COMMANDES 6-1	SCHEDA TASTIERA 6-1 DIGIT ROSSI ORIZZ.	1
104	1960129	COVCER CONTROL BOARD PP-V2	COUVERCLE COMMANDES PP-V2	COPERCHIO COMANDI PP-V2	1
105	1960508	CONTROLS BRACKET	ETRIER COMMANDESZN PLIE	STAFFA FISS.COMANDI K03/05 X PIEGATA	1
106	1960629	FLAT CONTROLS 60 6 VIE L=900	FLAT COMMANDES60 6 CONNECTEURS L 9	FLAT COMANDI 60 6 VIE L=900 C/CONNETTORI	1
107	1960032	CONNECTOR 9 VIE V2	CONNEXION 9 CONNECTEURS V2	CONNETTORE MASCHIO 9 VIE V2	1
108	1960104	CABLE FIXING (HIL-LO)	ARRET CABLE (HI-LO)	BLOCCACAVO (HI-LO)	1
300	1961120	MOTEUR ENSEMBLE	MOTOR ASSEMBLY	GRUPPO M.8 800MC 220-50/60HZ CLI	1
301	1961067	DADO QUADRATO	ECROU	DADO QUADRATO FE ZN M4 CH.7 H3,2	4
302	1961116	TURBINE MOTEUR	ROTOR MOTOR	GIRANTE PP-V2 MOT.8/40 X 80	1
303	1961115	MOTEUR	MOTOR	MOTORE 8/40x80 K 4V 220-240V 50Hz SX	1
304	1961070	FERMACAVO MOTORE	ARRET CABLE DE MOTEUR	FERMACAVO MOTORE PP-V2	1
305	1961117	PARE CHOCS MOTEUR	MOTOR SHOCK ABSORBER	AMMORTIZZATORE [PUFFER] MOTORE 8/40 X 80	4
307	1961073	DIFFUSORE DESTRO	CONVOYER DROITE	DIFFUSORE PP-V2 DX	1
308	1960164	M4 MOTOR SECURING NUT	ECROU	DADO ESAGONALE ART.SERPRESS 4M ZN	4
309	1961074	DIFFUSORE SINISTRO	CONVOYER GAUCHE	DIFFUSORE PP-V2 SX	1
311	1960027	CONNECTOR	CONNEXION STS 330 A1 (CLI)	CONNETTORE STS 330 A1 (CLI)	1
312	1960631	CAPACITOR	CONDENSATEUR 6,3MF 400V	CONDENSATORE 6,3MF 400V 10000 ORE	1
313	1961075	STAFFA FISSAGGIO CONDENSATORE	ETRIER SUPPORT CONDENSATEUR	STAFFA FISS.CONDENSATORE (V2)	1
314	1961076	COPERCHIO IMPIANTO ELETTRICO	COUVERCLE INSTALL. ELECTRIQUE ELEC	COPERCHIO IMPIANTO ELETTRICO PP-V2	1
316	1961118	VIS 4X9	SCREW 4X9	VITE 4X9 AFLLS TMT D9 FR PZ PMT	2
322	1961077	SUPPORTO CONNESSIONE	SUPPORT CONNEXION	SUPPORTO CONNESSIONE PP-V2	1
501	1960566	UPPER CHIMNEY FIXING BRACKET	ETRIER FIXATION TUBE SUP.ZN PIEG	STAFFA FISSAGGIO CAMINO SUP PIEGATA	2

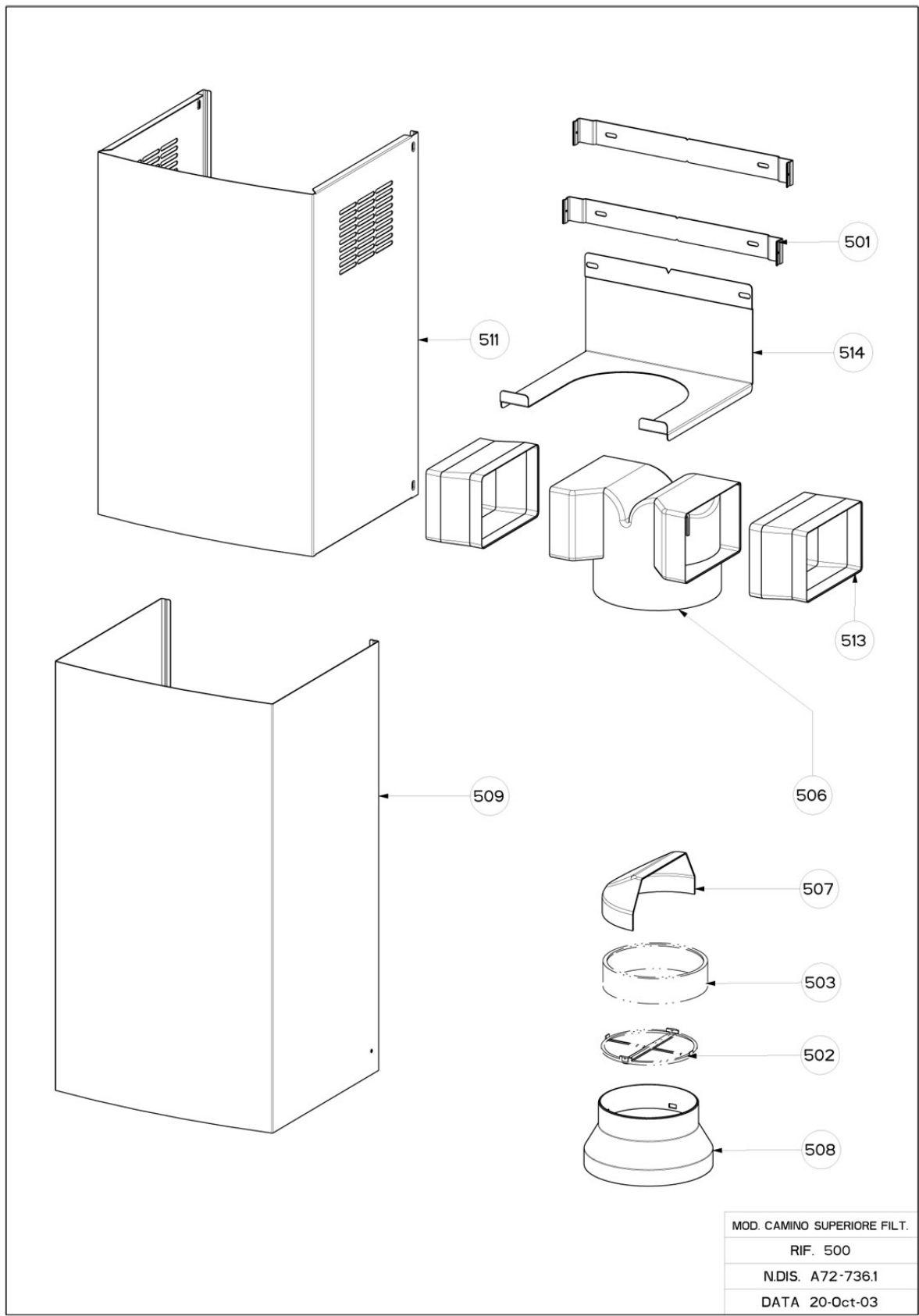
PO S	SERVIC E CODE	DESCRIPTION	DESCRIPTION	DESCRIZIONE	QUANTIT Y
506	1960243	FILTERING CONNECTION	RACCORD A RECYCLAGE (UP) (V2)	RACCORDO FILTRANTE (UP) (V2)	1
508	1960200	SPIGOT 120-150	BRIDE REDUCTION 150-120	FLANGIA RIDUZIONE 150-120 BK	1
509	1960348	LOWER CHIMNEY X A545 S.FRA	TUBE INFERIEUR PLUS X A545 S.FRA	CAMINO INFERIORE PLUS X A545 S.FRANKE	1
511	1960437	UPPER CHIMNEY PLUS X F460 PIEGATO	TUBE SUPERIEUR PLUS X F460 PLIE	CAMINO SUPERIORE PLUS X F460 PIEGATO	1
513	1960171	SPACER CONNECTION FOR RECIRCULATING	ENTRETOISE RACC.FILT.DISSEMBLE (P	DISTANZIALE RACC.FILT.DISASS.(PARETE)	2
514	1961078	SUPPORTO RACC. FILTRANTE	SUPPORT RACCORD A< RECYCLAGE	SUPPORTO RACC.FILTRANTE ZN	1
602	1960568	DIFFUSER BRACKET	ETRIER CONVOYER P/H.E-CUBE ZN PIEG	STAFFA DIFFUSORE P/H.E-CUBE ZN PIEGATA	1
603	1960218	PARTICULAR CABLE GUIDE	PARTICOLARE SERRE CABLE (V2)	PARTICOLARE PASSACAVO (V2)	2
604	1960166	CAPTIVATED NUT 5004-A 4M	ECROU	DADO IN GABBIA Q 404-08 M4	1
606	1960407	FIXING KIT	FIXATION	FISSAGGIO CAPP A ASSIEMATO	2
607	1960256	PLUG S8	ETRIER S8 C FISCHER 51049	TASSELLO S8 C FISCHER 51049	4
608	1960324	ZINC PLATED SCREW	VIS ZINCATA M4X40 TC CACC.	VITE ZINCATA M4X40 TC CACC.	1
609	1960254	CABLE CLAMP D223-110	ETRIER ETRIER SERRE CABLE	STAFFA FERMACAVO	1
610	1960148	FEEDING CABLE COVER	COUVERCLE CABLE ALIMENTATION (V2)	COPERCHIO CAVO ALIMENTAZIONE (V2)	1
613	1960239	BODY FIXING KNOB	POIGNE FIXATION CHASSIS	POMELLO FISSAGGIO SCOCCA	1
614	1960318	SCREW 4,2X44	VIS 4,2X44,4 T/T F.A PM ZN	VITE 4,2X44,4 T/T F.A PM ZN	4
615	1960432	DIFFUSER SUPPORT ASS.STILO/3 ZN	SUPPORTCONVOYER ENSEMBLE STILO/3 ZN	SUPPORTO DIFFUSORE ASS.STILO/3 ZN	1
616	1960258	CHARCOAL FILTER COVER	BOUCHON C.A. (V2)	TAPPO C.A. (V2)	1
617	1960014	ELECTRIC CABLE	CABLE ALIMENTATION 3X0,75X2100W 232	CAVO AL.3X0,75X2100W 232+644(CONN) SP.EU	1
618	1960250	MAIN CABLE BOX	BOITE INSTALLATION ELECTRIQUE	SCATOLA IMPIANTO ELETTRICO (V2)	1
619	1960634	ELECTRONIC BOARD M-CS M8 4V 220V	CIRCUIT IMPRIME ELECTRIQUE M-CS M8	SCHEDA BASE M-CS M8 4V 220V 50/60HZ	1
620	1960135	MAIN CABLE BOX COVER	COUVERCLE BOITE INSTALLATION ELECTR	COPERCHIO SCATOLA IMPIANTO ELETTR.(V2)	1
624	1960023	MALEHOLDER BOX	BOITE PORTAMASCHI 4 CONNECTEURS	SCATOLA PORTAMASCHI 4 VIE	1
625	1960022	FEMALEHOLDER BOX	BOITE CONNEXION ELECTRIQUE 4 CONNEC	SCATOLA PORTAFEMMINE 4 VIE	1
626	1960048	TRANSFORMER 60W 230V	TRASFORMATEURTOR.60W 230V D85-29H3	TRASFORMATORE TOR.60W 230V D85-29H32 C/C	1
627	1960164	M4 MOTOR SECURING NUT	ECROU	DADO ESAGONALE ART.SERPRESS 4M ZN	1
628	1960294	TOROID SUPPORT	SUPPORT TRANSFORMATEUR 40-60W (V2)	SUPPORTO TOROIDE 40-60W (V2)	1
629	1960302	WASHER 5X34 2MM	RONDELLE D.7,5X34 SP.2 MM	RONDELLA D.7,5X34 SP.2 MM	1

PO S	SERVIC E CODE	DESCRIPTION	DESCRIPTION	DESCRIZIONE	QUANTIT Y
630	1960301	NUT	ECROU AD ALETTE M4	DADO AD ALETTE M4	1
632	1960103	REFINING COVER F. EASY CUBE	BOUCHON POUR EASY CUBE	TAPPO RIFINITURA PER EASY CUBE	2
633	1960224	SECURING PIN D4,6X11	CLIP D4,6X11 ART.000670111 BK	CLIP D4,6X11 ART.000670111 BK	1

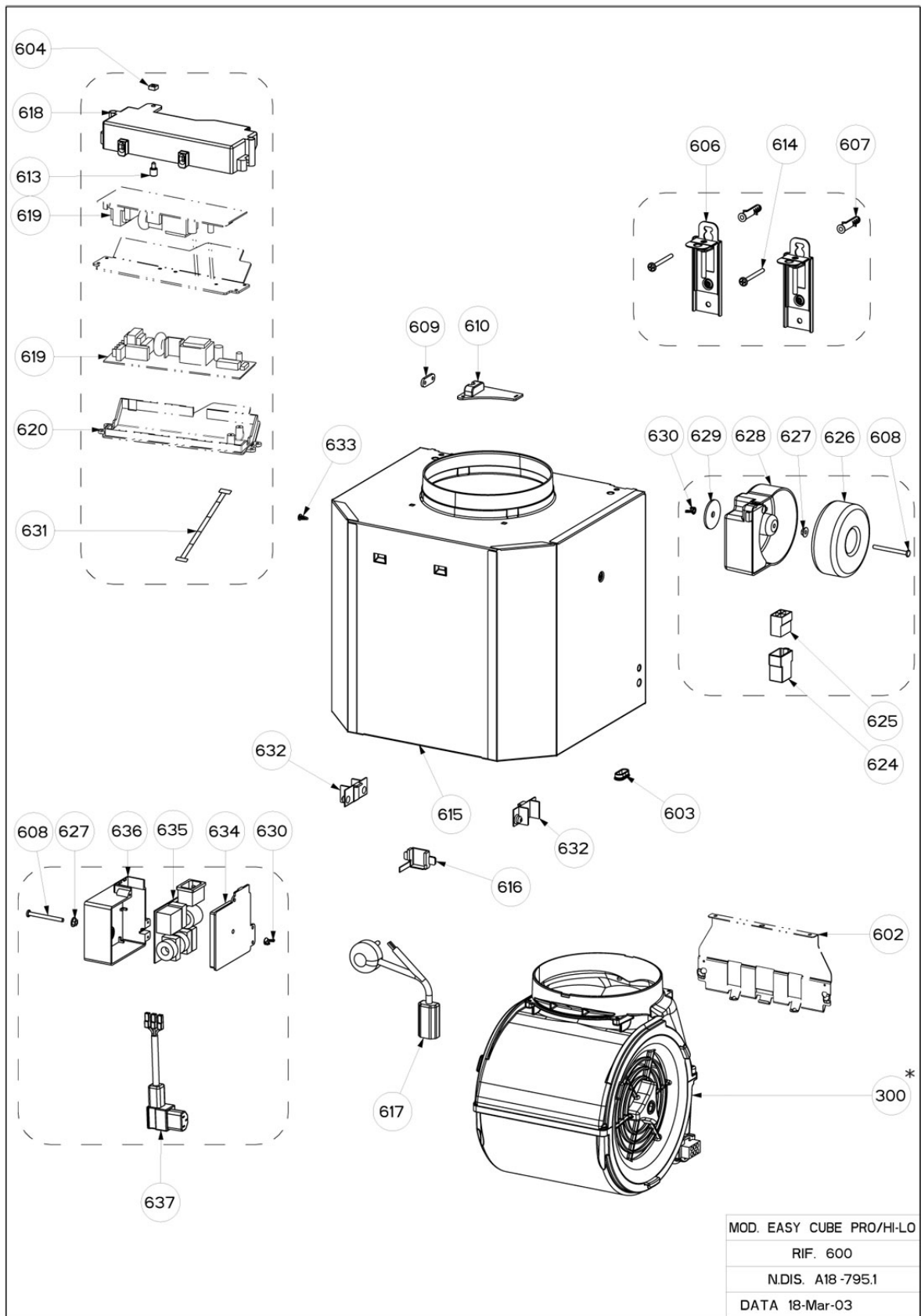




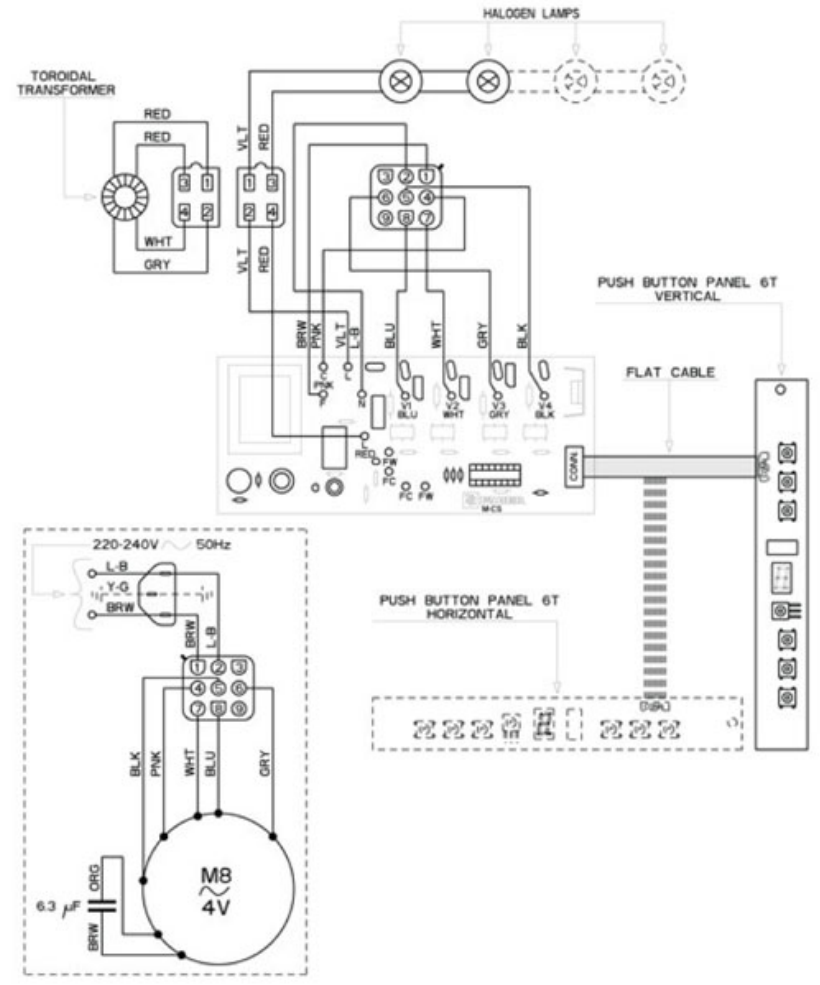




MOD. CAMINO SUPERIORE FILT.
RIF. 500
N.DIS. A72-736.1
DATA 20-Oct-03

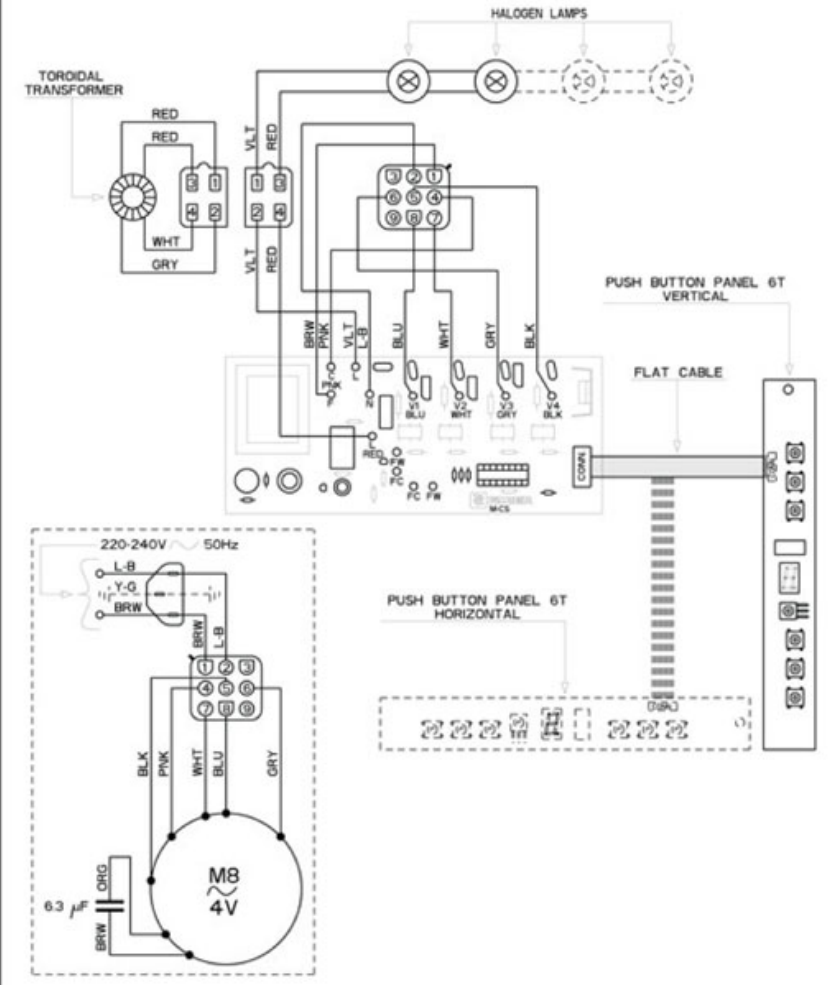


- | | | | |
|-----------|-------------------|-----------|-------------------|
| I | Schema Elettrico | NL | Schema Electrisch |
| GB | Electric Diagram | E | Esquema Eléctrico |
| F | Schéma Electrique | PT | Esquema Eléctrico |
| D | Schema Elektrisch | | |



436002935 SD8_010 r-

- | | | | |
|-----------|-------------------|-----------|-------------------|
| I | Schema Elettrico | NL | Schema Electrisch |
| GB | Electric Diagram | E | Esquema Eléctrico |
| F | Schéma Electrique | PT | Esquema Eléctrico |
| D | Schema Elektrisch | | |



436002935 SD8_010 r-